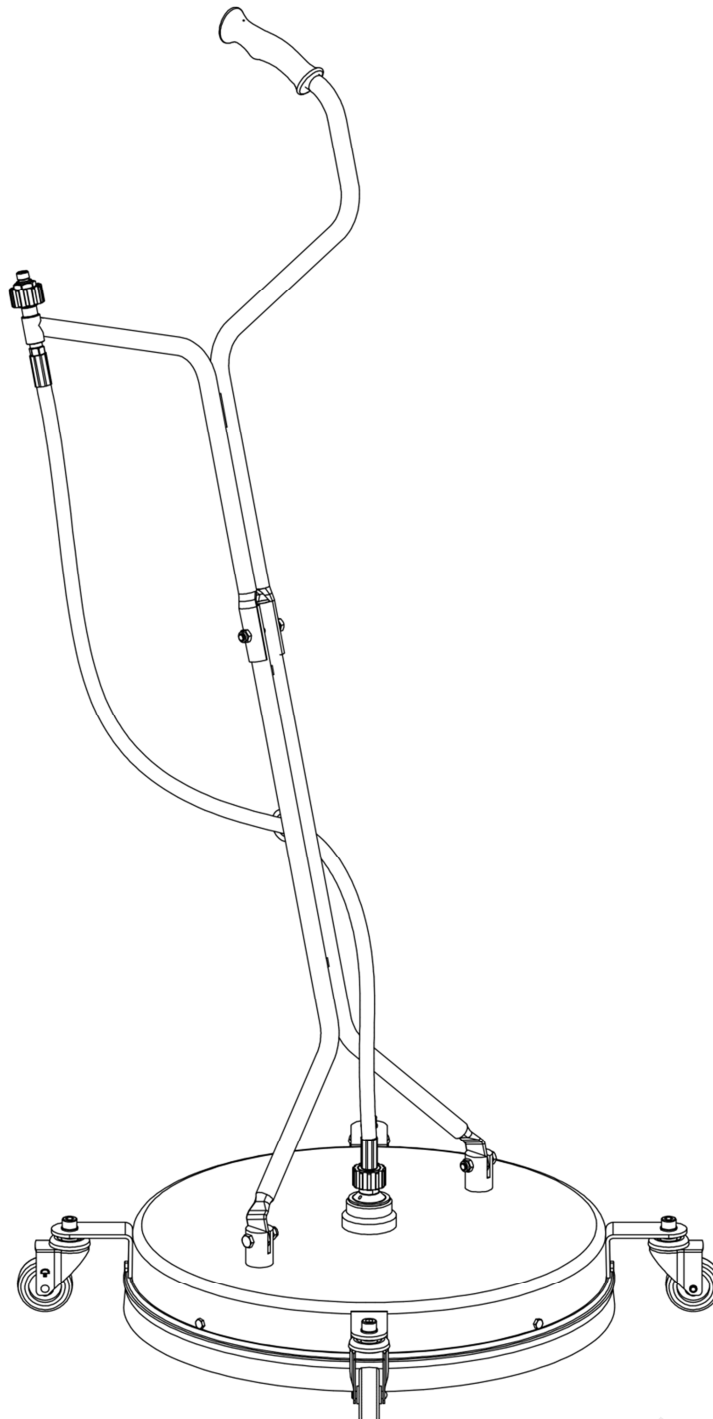


Commercial Surface Cleaner

Technical Data

Pressure	7300psi (50Mpa)
Temperature	250°F
RPM	max. 2000 rpm
Housing	ø21"
Water connection	1/4"NPTM
Nozzle connection	2x 1/8"NPTF
Throughput medium	water (pH 3-12)



Commercial Surface Cleaner

Indication (original language German):

- Read all instructions, check overall conditions and safety requirements before initial operation of the product.
- Our product should only be installed by experienced users of high pressure equipment.
- Safety regulations and guidelines (Accident Prevention Rules) from the manufacturer of your high pressure cleaner are applicable.
- Nozzle installation according to Nozzle manufacturer.
- Do not move the product over objects or uneven surfaces.
- Do not run the product if the rotor-arm is out of balance or bent, damage to the swivel will result.
- No modifications to the product are permitted.

Caution:

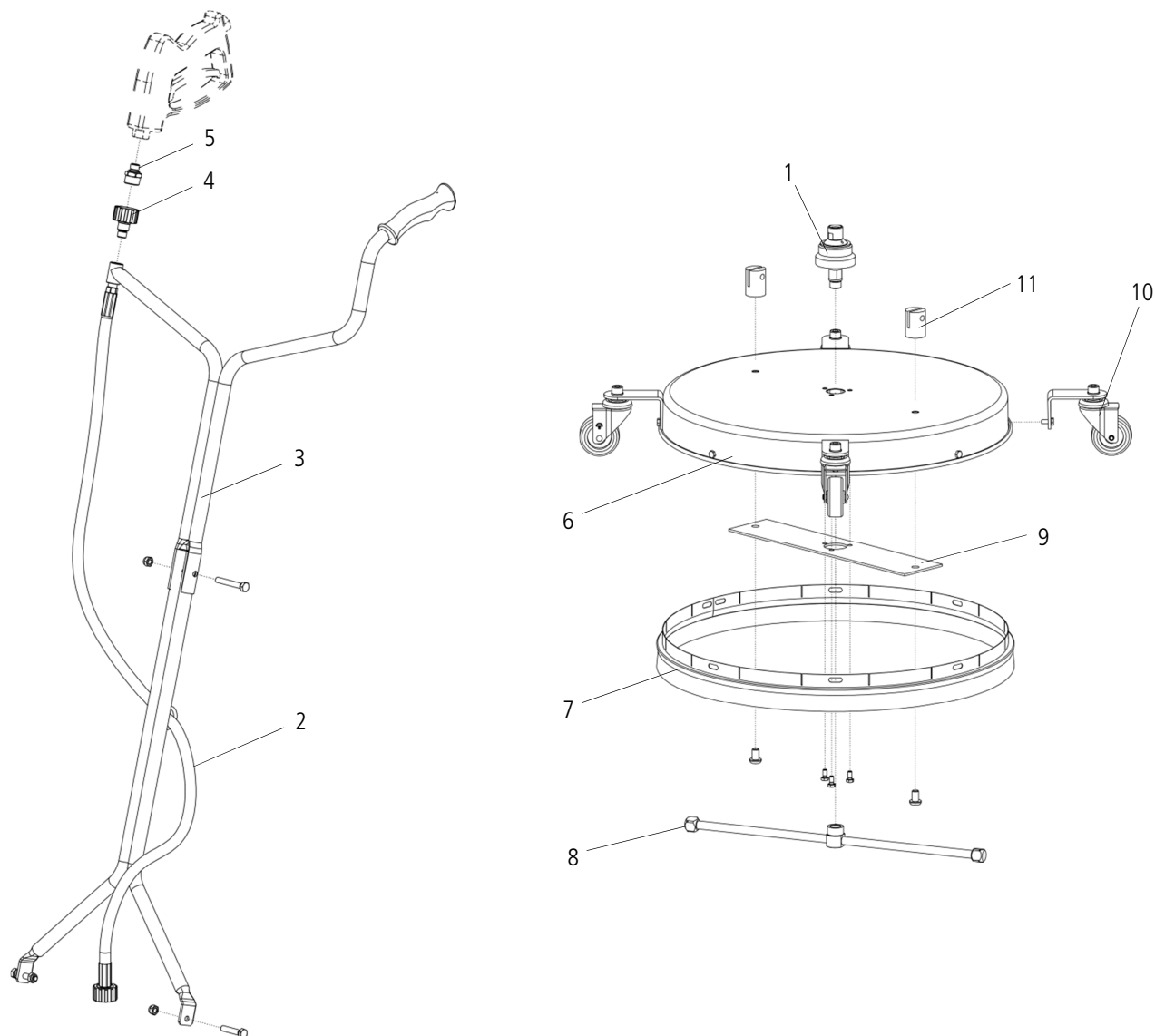
- Always use protection gear when using products connected to high pressure.
- Before any maintenance or nozzle-change, turn off the high pressure water supply, e.g.: turn off and secure the power switch.
- After turning off the system, allow all selfpropelled equipment to come to a complete stop before handling. Risk of injury due the rotor-arm.
- Do not lift up the product while operating.

Warning:

- Never direct any high pressure water-jet at humans, animals or electric installations.
- Do not touch the rotor-arm during operation. Risk of injury.

		Declaration of Conformity Pressure Equipment Directive 97/23/EC Annex III.	
Manufacturer:		Mosmatic AG Oberhellenschwilerstrasse 6 CH - 9126 Necker Switzerland Phone: +41 (0) 71 375 64 64 Internet: www.mosmatic.com	
We hereby declare that the product listed below based on the conception, design and construction in the design as we launch the product, conclusively at the time of the declaration applicable alterations, conforms to the safety requirements of the Pressure Equipment Directive.			
Product Description:		High Pressure Accessories	
Type:		FL / DR / SPI / TYR / WB / HUR	
Product Characteristics:		Pressure Equipment Directive 97/23/EC Article 3 / Number 1.3 / Letter a) / Second dash Article 3 / Number 1.3 / Letter b) / Second dash Fluid Group 2	
Applied Conformity Assessment Procedure:		Directive 97/23/EC Module H (Full Quality Assurance)	
EC Standard Guidelines:		Machinery Directive 2006/42/EG Pressure Equipment Directive 97/23/EC	
Applied Harmonized Standards:		ISO 12100:2011 - Safety of Machinery ISO 9001:2008 - Quality Management System	
Authorised Person:		Patrick Rieben	
By any modification from the product, alterations on the product or the fitting of non-approved spares is the validity of the declaration of conformity with immediately effective terminated.			
Necker, 2016		Signature: 	

Commercial Surface Cleaner



Spare parts list

Pos.	Art. Nr.	Description
1	55.263	Swivel (DYDI)
2	901.948	HP-hose (R1/4" M / M22x1.5-F)
3	904.985	Fork cpl. without hose + gun
4	50.160	Quick-Connect (M22x1.5-F / G1/4" M)
5	51.278	Adapter (M22x1.5-M / 1/4" NPTM)
6	900.513	Cover
7	80.9009	Brush ring replacement-kit
8	82.946	Rotor arm (ø18.5")
9	900.958	Reinforcement plate
10	80.912	Caster (ø2.4") replacement-kit
11	80.992	Fork holder replacement-kit